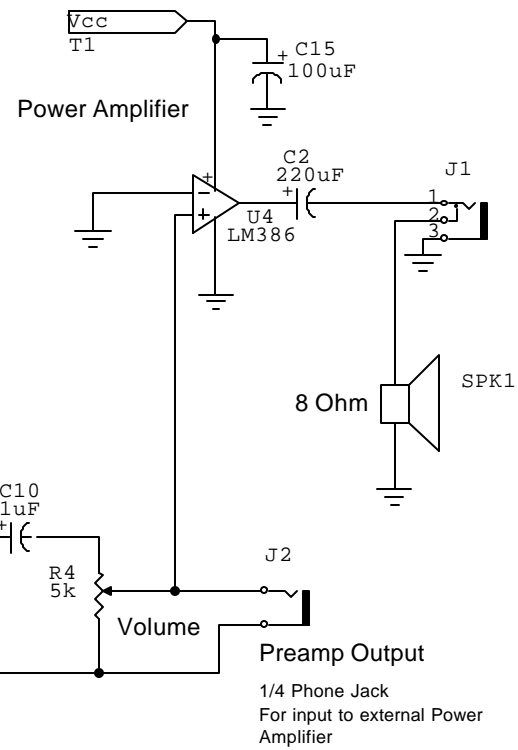
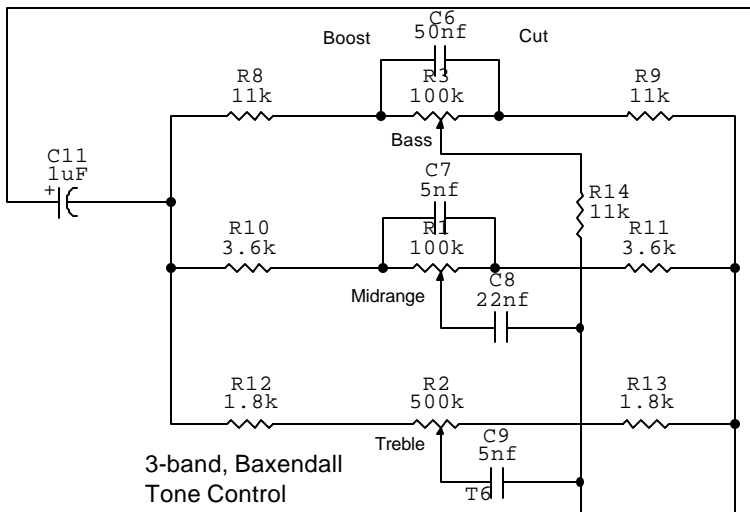
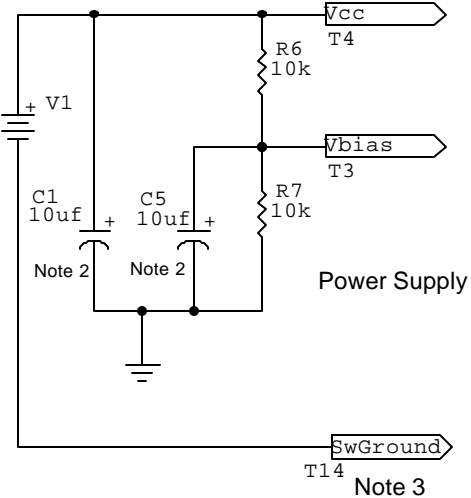


Note 1
6V



Headphone Output

3.5mm, normally-closed switching jack, for 8-ohm "Walkman"-type headphones; disconnects speaker when headphones are in use.

To use Stereo Headphones, use a stereo switching jack and feed the tip and ring conductors, leaving the ground open. This will put the headphones in series and provide balanced, binaural sound.

SYM1



Notes

1. Four AA Alkaline Penlight Cells
2. Solid Tantalum
3. The "SwGround" line is grounded when a 1/4-inch, mono phone plug is inserted into the input jack, thereby acting as a power switch..

The PracticeMan™

The PracticeMan is a self-contained, battery-powered guitar amplifier designed to fit into a small plastic housing, complete with speaker.

The design features a mixable clean/distorted sound and a post-mix three-band active tone control. It drives the small built-in speaker with about 400 milliwatts of power--enough to take with you to the music store when trying out guitars; Personal Stereo headphones can be used to

en

ck

nd

de a

d

practice without disturbing others.

Last Revision: 8/23/97

Copyright (c) 1981 - 1997, Len Galasso. All rights reserved --- ljg19@idt.net --- <http://idt.net/~ljg19/>

